

2023

Collection


UNICO[®]
TILES

Grow Together with Clay Creations



300X600^{MM}

GLAZED PORCELAIN TILES
WITH DIGITAL PRINT

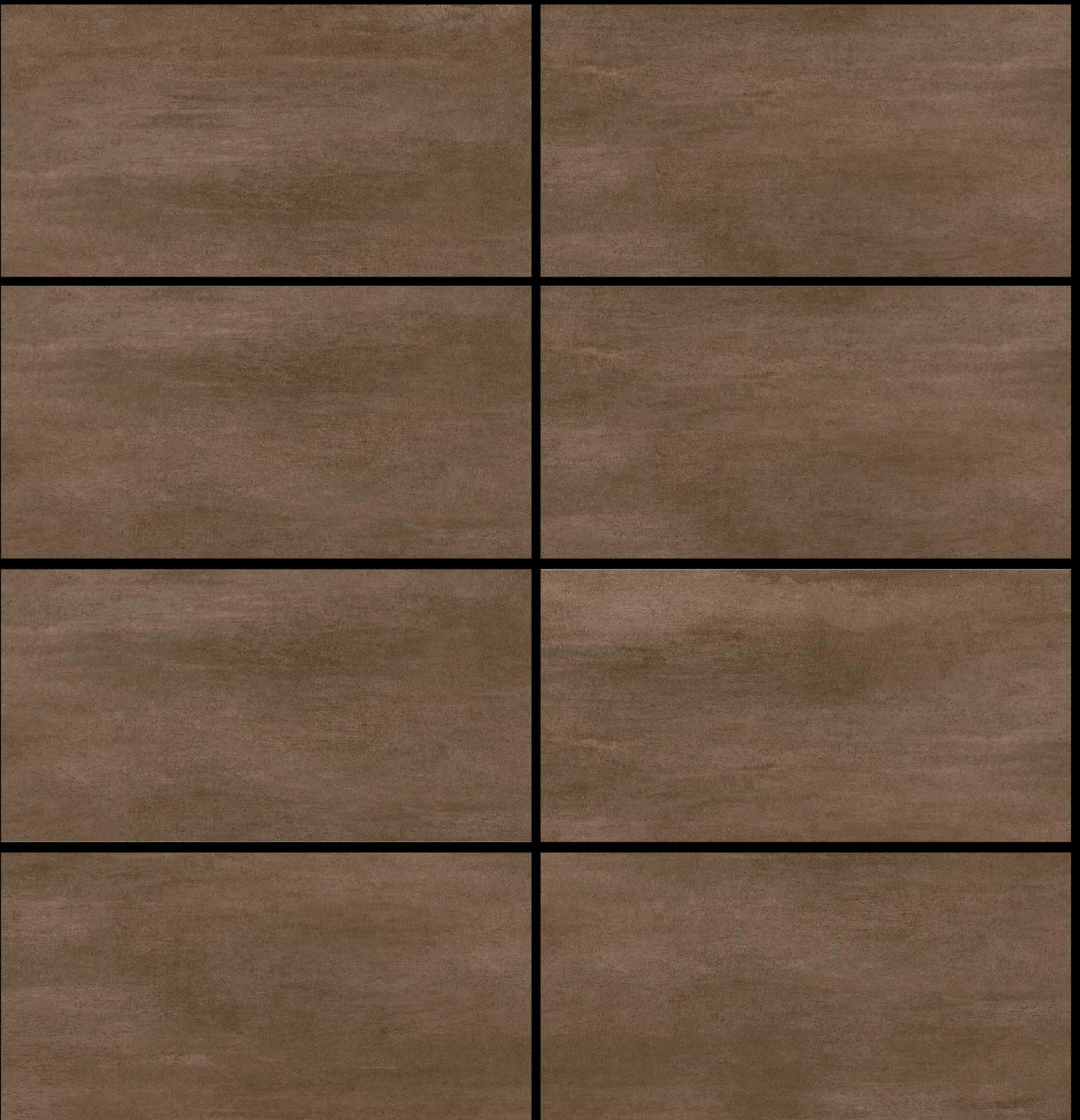
 **Matt**

 random
aleatorio |  wall / floor tiles
pavimenti / rivestimenti |  use 3mm space
usare lo spazio 3mm



 **DANXIA BROWN**

 **300X600 mm**



 Eco Friendly

 Digital Printing +

 High Reflection Glaze

 Abrasion Resistance

 Imported Super Glaze

Digital Glazed Vitrified Tiles

(COLORS)

6

■ DUBLIN BEACH



■ DUBLIN CREMA



■ DUBLIN SAND



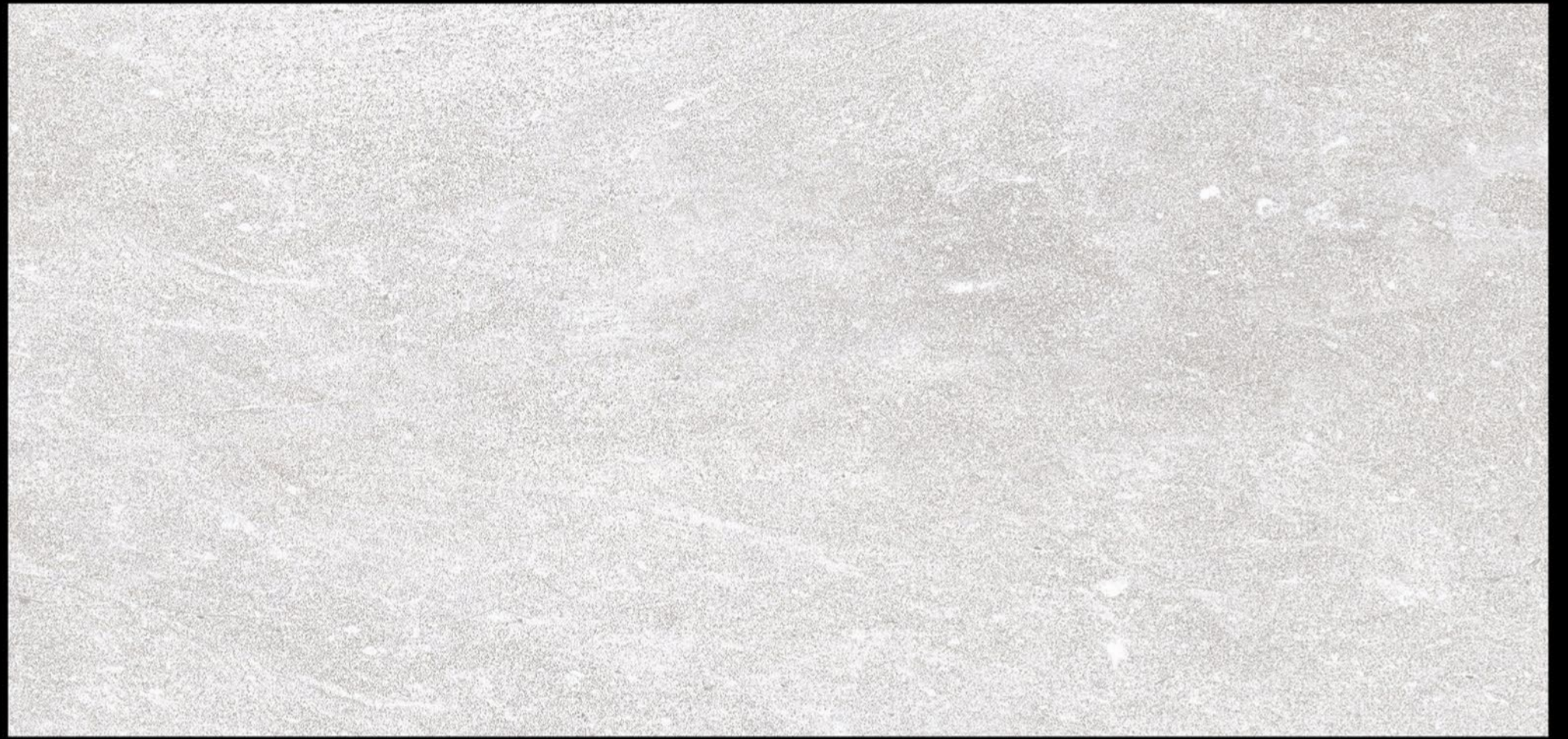
THICKNESS
9MM

FINISH
MATT

SIZE
300x600MM
(12"x24")



■ DUBLIN WHITE



■ DUBLIN GREY



■ DUBLIN GRIS

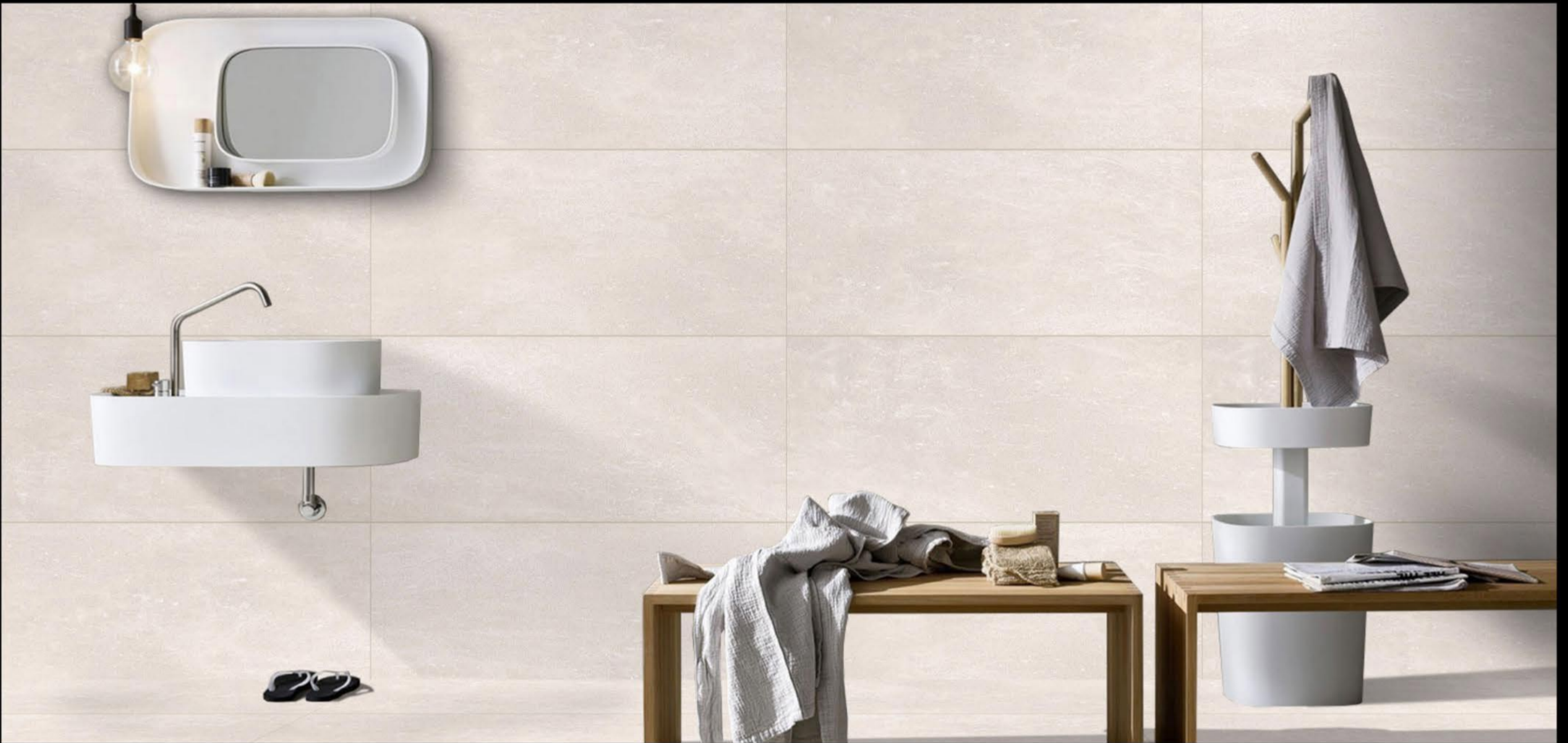


THICKNESS
9MM

FINISH
MATT

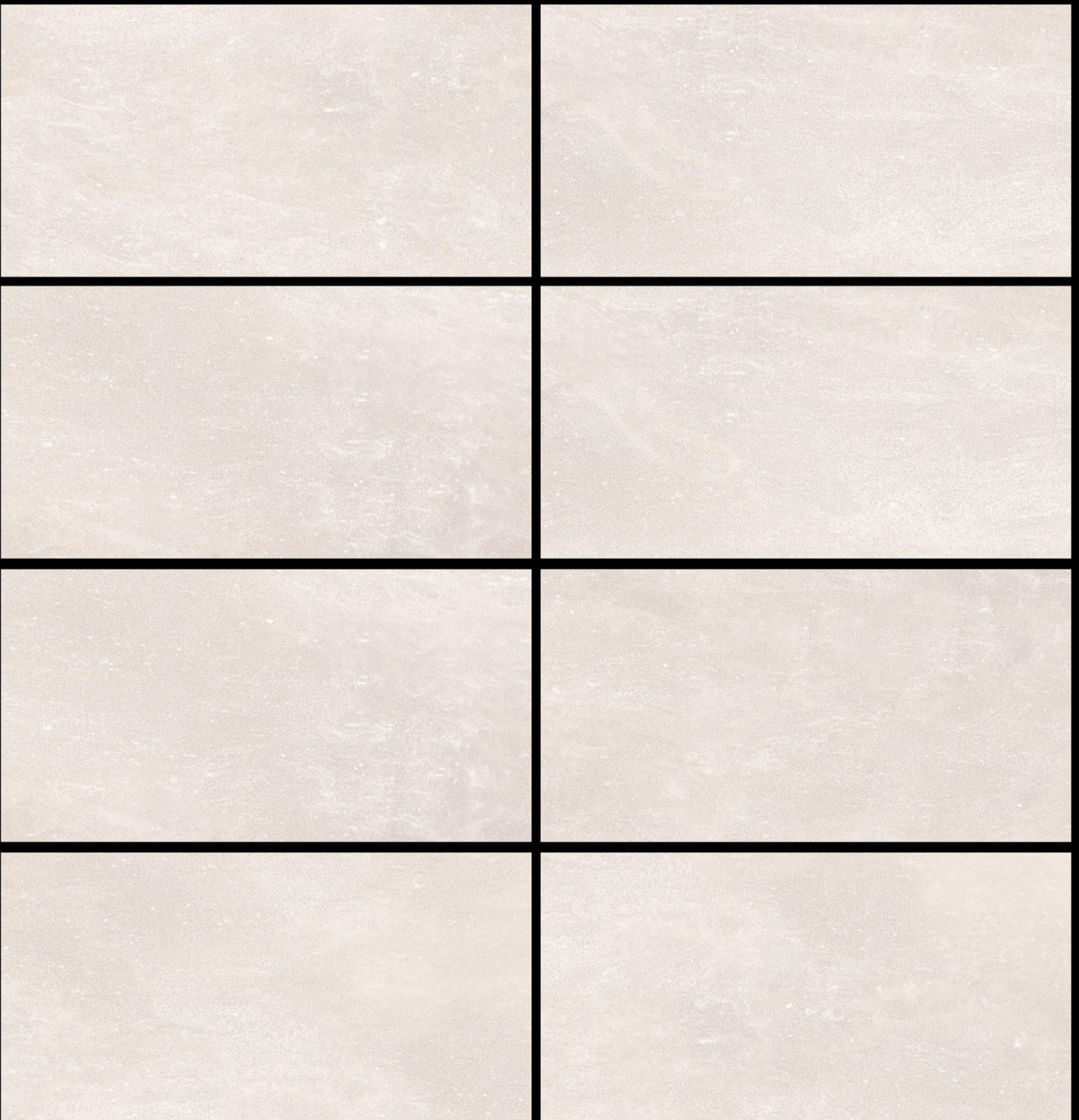
SIZE
300x600MM
(12"x24")





■ DUBLIN CREMA

■ 300X600 mm



(COLORS)

6

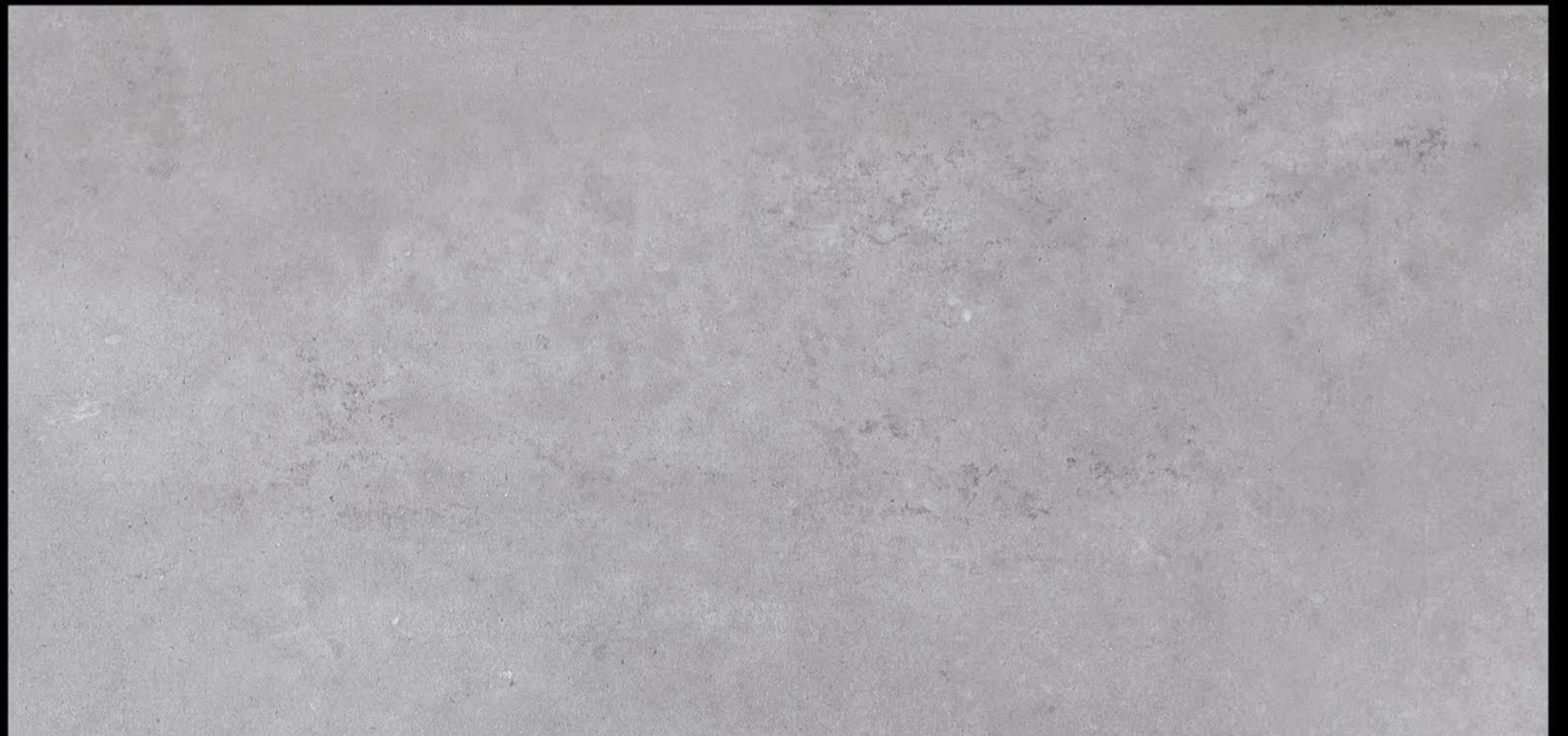
■ ELAPSO ARK



■ ELAPSO SKY



■ ELAPSO GREY



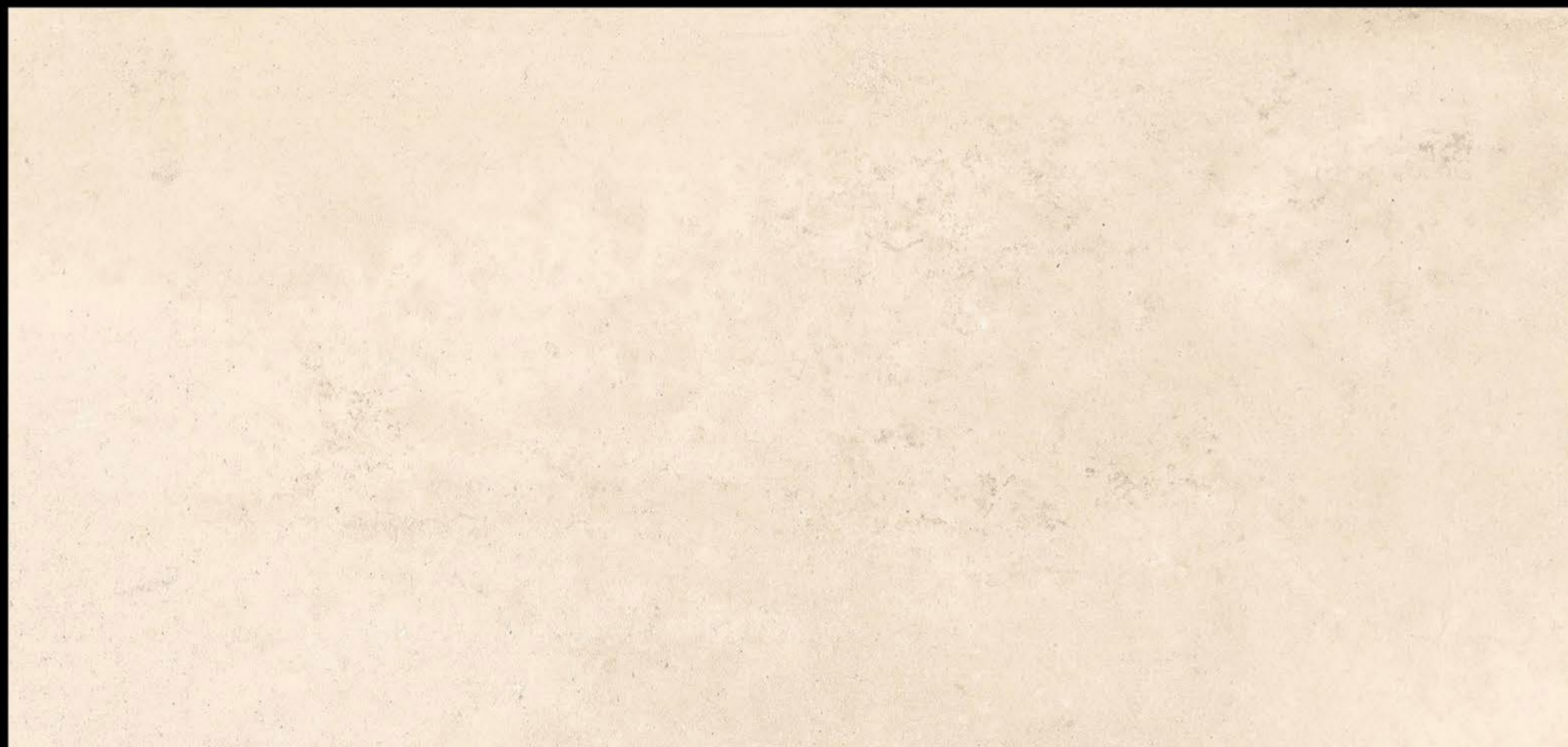
THICKNESS
9MM

FINISH
MATT

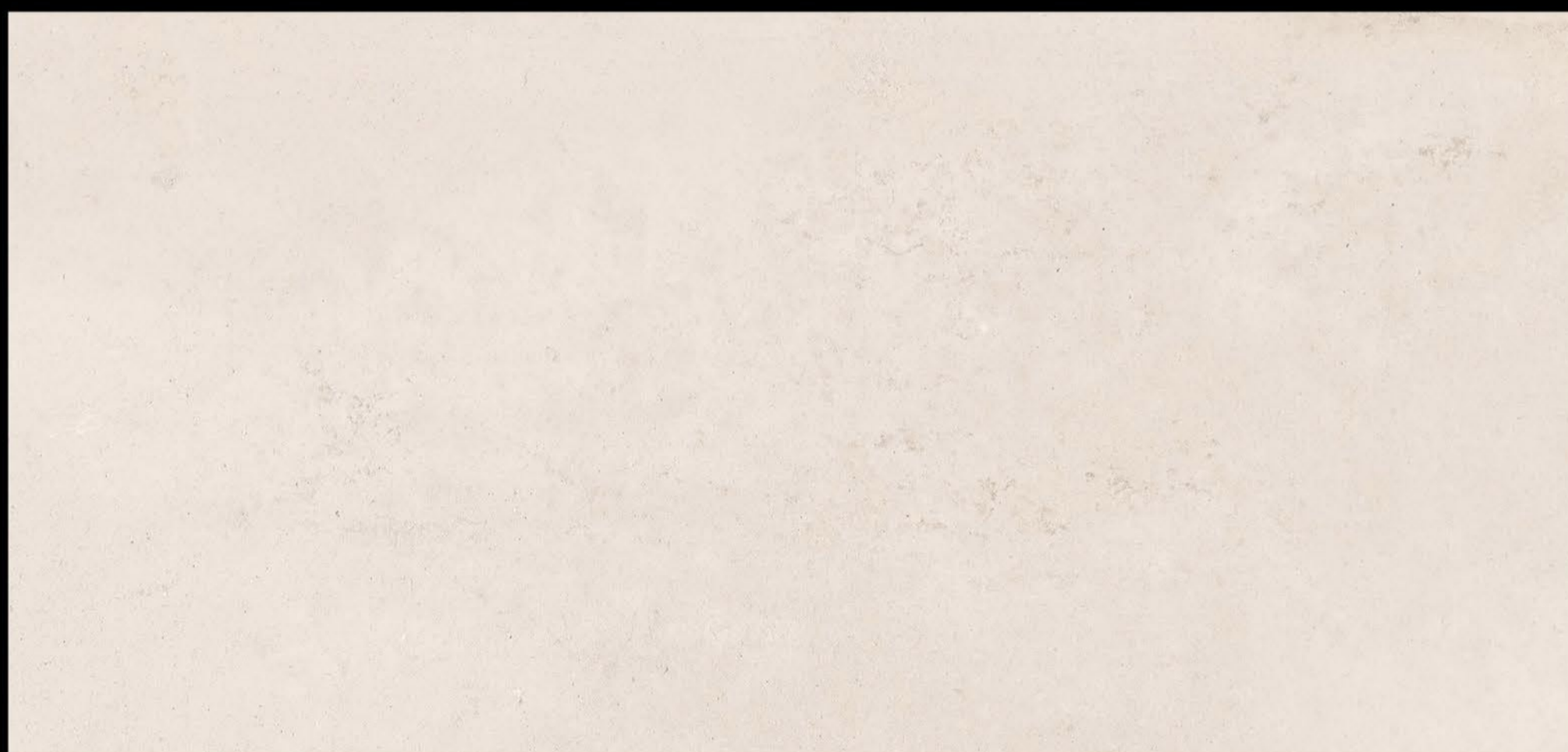
SIZE
300x600MM
(12"x24")



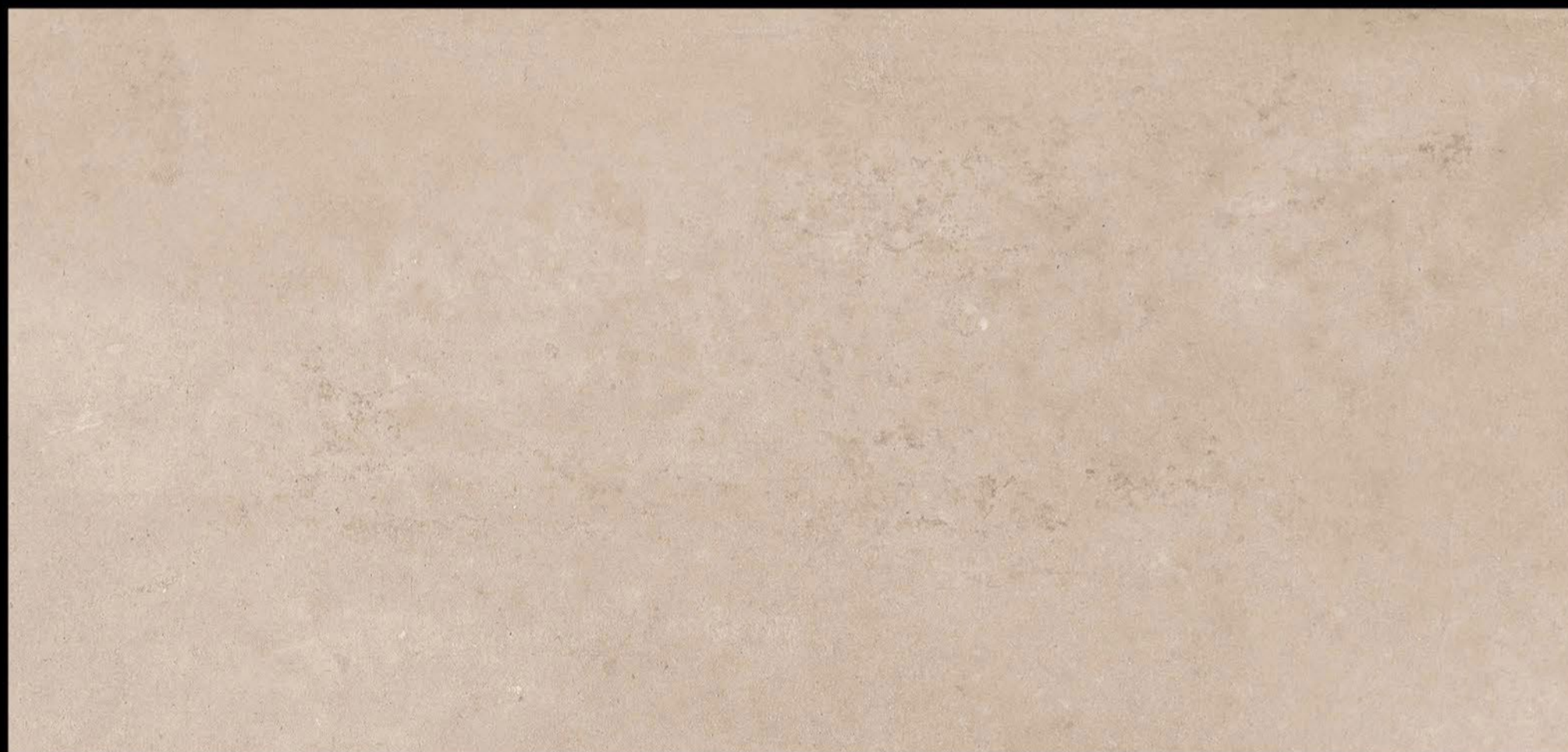
■ ELAPSO BLEND



■ ELAPSO NATURAL



■ ELAPSO NOCE



THICKNESS
9MM

FINISH
MATT

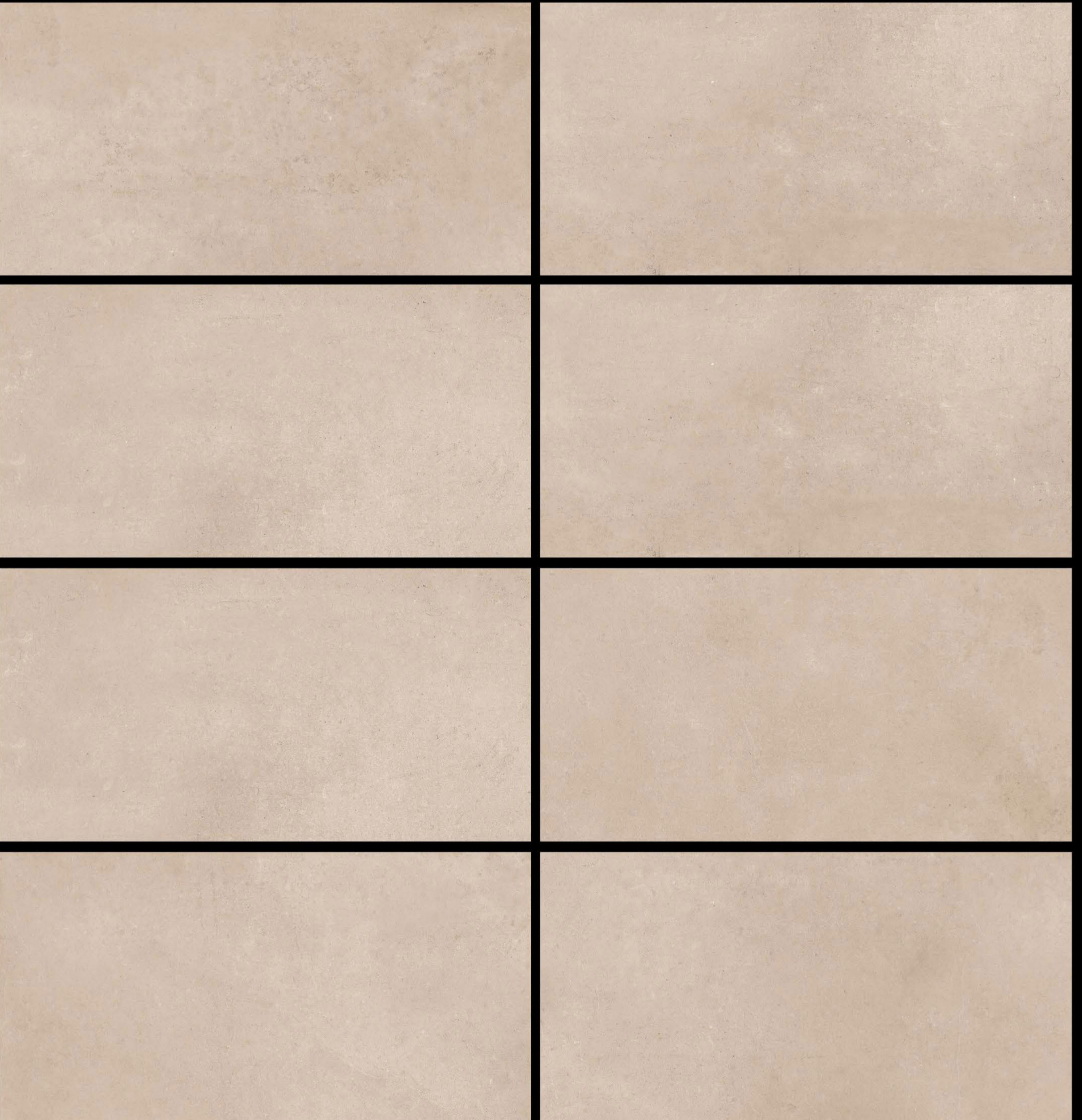
SIZE
300x600MM
(12"x24")





■ ELAPSO NOCE

■ 300X600 mm



(COLORS)

6

■ GLAM BEIGE



■ GLAM BONE



■ GLAM MUD



THICKNESS
9MM

FINISH
MATT

SIZE
300x600MM
(12"x24")



■ GLAM IVORY



■ GLAM ICE




■ GLAM ASH



THICKNESS
9MM

FINISH
MATT

SIZE
300x600MM
(12"x24")

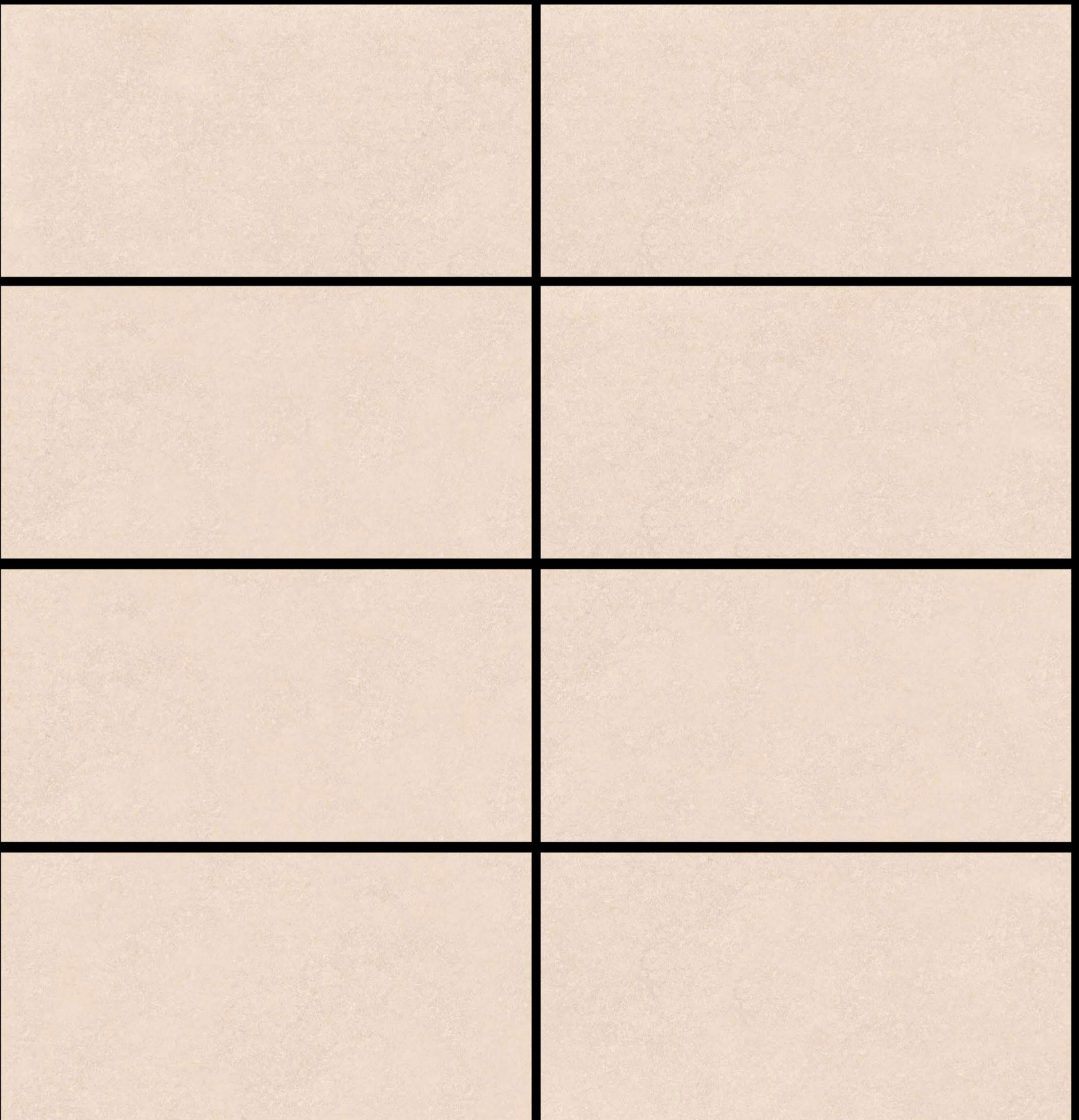
 **M a t t**

 random |  wall / floor tiles |  use 3mm space
aleatorio | *pavimenti / rivestimenti* | *usare lo spazio 3mm*



 **GLAM IVORY**

 **300X600 mm**



 Eco Friendly

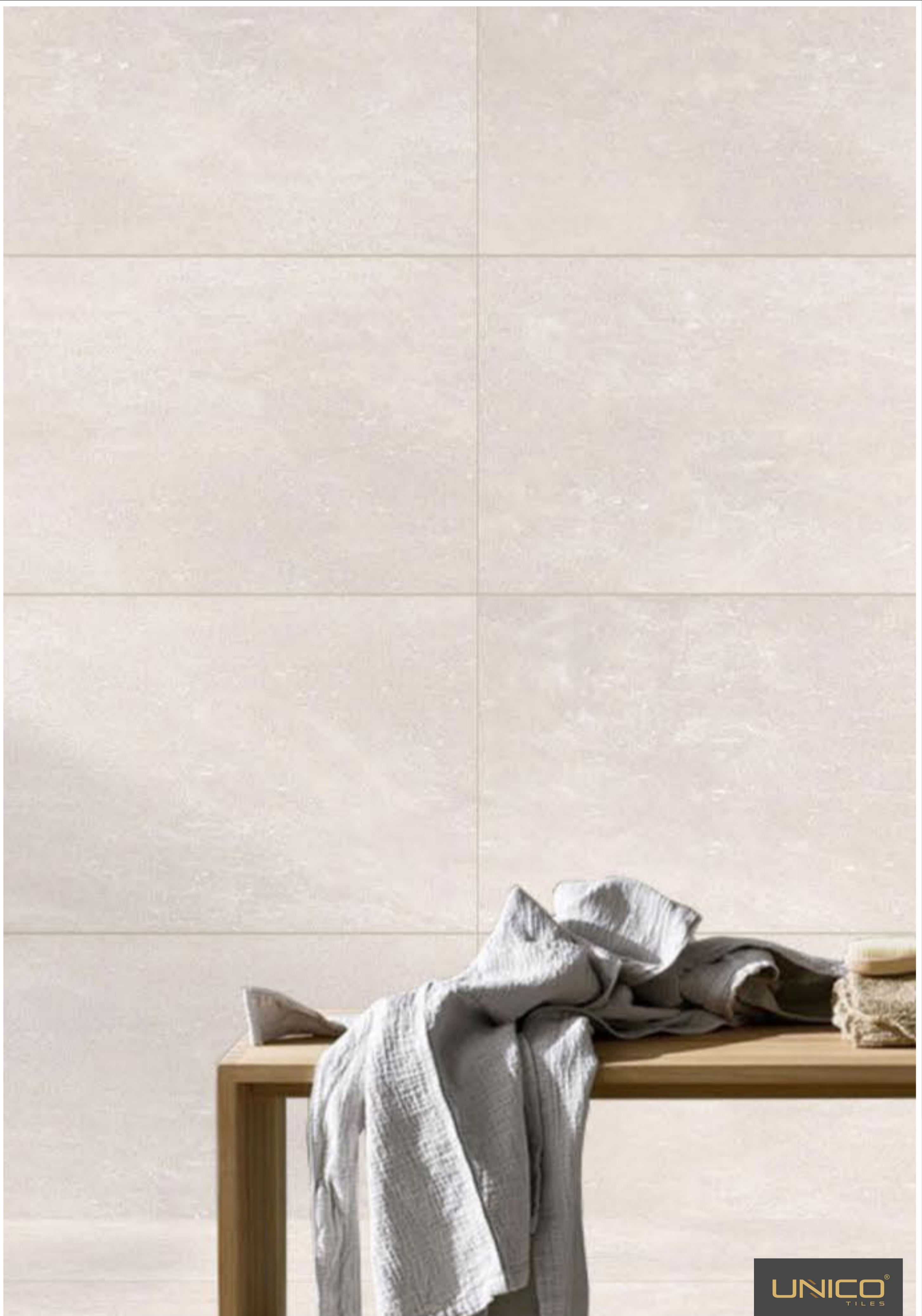
 Digital Printing +

 High Reflection Glaze

 Abrasion Resistance

 Imported Super Glaze

Digital Glazed Vitrified Tiles



Grow Together with Clay Creations

PACKING DETAIL

Size	Thickness	No. of Tiles/Box.	Coverage Area/Box.
300X600mm	9 mm (Approx)	05 Pcs. Per Box	0.90 Sq. Mtr
Weight Per Box	No.of Pallet in container	Total Box in Pallet	Sq.Mtr lodability with pallet
17.7Kg. (Approx)	22 Pallet	72 Box	1425.6 Sq. Mtr

AN
ISO
CERTIFIED
COMPANY



Corporate Office:

UNICO TILES PVT. LTD.

6 - Shakti Industrial Estate, Gujarat Gas Office Lane,
Behind Shakti Chambers - 1, 8-A, National Highway,
Morbi - 363 642 (Guj.) INDIA. Ph.: 02822 - 244141

Cell & WhatsApp: +91 98 25 03 52 19 | +91 78 78 44 66 77

 upen108

 info@unicotiles.com | upen@unicotiles.com

 www.unicotiles.com | www.unicosanitaryware.com | www.unicostone.in

Follow us On:   